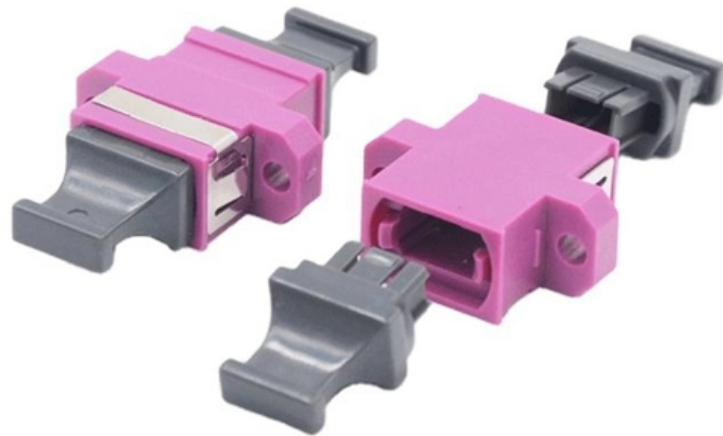


# 2016 Cable Tray





## 2016 Cable Tray

---

### **Creating a Route for Connectors through Cable Tray**

Cable tray fittings to create cable tray assembly. Electrical connectors at openings of the cable tray. Set options in the Route Properties PropertyManager, then click . The new route subassembly appears

[Read More](#)

### **Best Practice Guide to Cable Ladder and Cable Tray Systems**

This guide covers cable ladder systems, cable tray systems, channel support systems and associated supports intended for the support and accommodation of cables and possibly other electrical

[Read More](#)



## Technical Data Sheet Cable Tray System

The cable tray has been tested and proven to perform to BS EN 61537:2007 - Cable Management - Cable Tray Systems and Cable Ladder Systems, on a variety of tests including Safe Working Loads,

[Read More](#)

## REGULATION (EU) 2016/ 424 OF THE EUROPEAN PARLIAMENT

Position of the European Parliament of 20 January 2016 (not yet published in the Official Journal) and decision of the Council of 12 February 2016. Directive 2000/9/EC of the European Parliament and of

[Read More](#)

## Cable Tray and Reels , Wire and Cable Management

Fast installation with dependable support. Everything you need to build a cable management system, including Cablofil wire mesh cable tray, ladder cable tray,



## **cable tray technical specifications**

It should be noted that independent testing has been carried out to verify the structural performance of cable tray at the minimum and maximum temperature classifications for test conditions. They should

[Read More](#)

## **Types of Cable Trays - Advantages, Applications and Sizes**

Explore the types of cable trays, their advantages, applications, and standard sizes. Learn how they improve cable management and support various industries.

[Read More](#)

## **Trunking and cable trays**



Cable markers Soldering, crimping and IDC tools Heat tools Cable strippers, cutters and pliers Measuring tools Screwdrivers, hand-tools and fitting tools Cutting tools Protective clothing, workwear

[Read More](#)

## **Cabstrut Product Catalogue 2016 LR , PDF , Duct (Flow**

The document describes various cable and reticulation management systems including aluminum and PVC powerskirting, utility poles, floor and wall

[Read More](#)

## **SECTION 260536**

Section 270536 "Cable Trays for Communications Systems" for cable trays and accessories serving communications systems. ACTION SUBMITTALS Product Data: For each type of product. Include

[Read More](#)



## **Product Catalogue Cable Management Solutions**

With over 20 years of experience T&B Cable Tray provides a complete solution in cable management systems including design, manufacturing and technical support by offering a complete solution for

[Read More](#)

## **Cable Tray RLC And RS**

MLAR - Installation Systems / Cable Tray RLC And RS In the MLAR 10/2016 Model Guideline for routing Systems, a wide variety of options are listed that enable

[Read More](#)

## **Codes and Standards , Cable Tray Institute**



The Cable Tray Institute is making available the current edition of this practical guide for the proper installation of aluminum or steel cable tray systems. These guidelines will be useful to engineers,

[Read More](#)

## **GUIDE CABLE TRAYS TECHNICAL**

In accordance with its continuous improvement policy, Legrand reserves the right to change the specifications and illustrations without notice. All illustrations, descriptions and technical information

[Read More](#)

## **Cable Tray RLC And RS**

The MLAR installation system RLC 60 or RS 60 uses cable trays with a rail height of 60 mm in widths of 100 to 400 mm or 100 to 600 mm.

[Read More](#)



## Cable Trays System

Cabel trays, fittings, barrier strips, covers, accessories 5 Items Show 25 50 75 100 per page Sort By Cable Trays in various edge heights Edge Height 35 Edge Height 50 Edge Height 60 Edge Height 85

[Read More](#)

## What Obstruction Rules Apply to Cable Tray?

However, the cable tray may be centered directly below some sprinklers, but off to the side for other sprinklers. What obstruction criteria from NFPA 13 (2016 Edition) would apply?

[Read More](#)

## Cable Trays System



5 Items Show 25 50 75 100 per page Sort By Cable Trays in various edge heights Edge Height 35 Edge Height 50 Edge Height 60 Edge Height 85 Edge Height 100 Edge Height 110 Fittings in various edge

[Read More](#)

## Creating a Route for Connectors through Cable Tray

Select the route segments between connectors on both sides of the Cable Tray. In Wire From-To List, click Select Path.

[Read More](#)

## Cable Tray

Standard Support Construction Of The Cable Tray RS With the RS 60 cable tray installation system, we offer you the last installation type of the standard support

[Read More](#)



## **Wire Mesh Cable Tray System**

Wire Mesh Cable Tray System for Channeling of Cable Wiring A Simple-to-Install basket cable tray for safe and proper installation of facility wiring in the ceiling and under the floor.

[Read More](#)

## **Cable Tray and Ladder Systems**

Cable Tray and Ladder Systems Basor Electric, the premier choice for cable management solutions, delivers unparalleled quality and innovation in cable tray and ladder systems. With a diverse range of

[Read More](#)

## **How to Install Cable Tray: A Comprehensive Guide to Different Cable**



Welcome to our step-by-step guide on installing cable trays! In this video, we'll explore the different types of cable trays available and provide detailed instructions for their installation.

[Read More](#)

## **CABLE MANAGEMENT SYSTEMS CABLE TRAYS & ACCESSORIES**

Cable Trays are designed to meet most requirements of cable and electrical wire installations and comply to local and international standards of fabrications and finishes.

[Read More](#)

### **Contact Us**

---

For datasheets, pricing, or custom data center infrastructure solutions, please visit:  
<https://zeldaterblanchephotography.co.za>