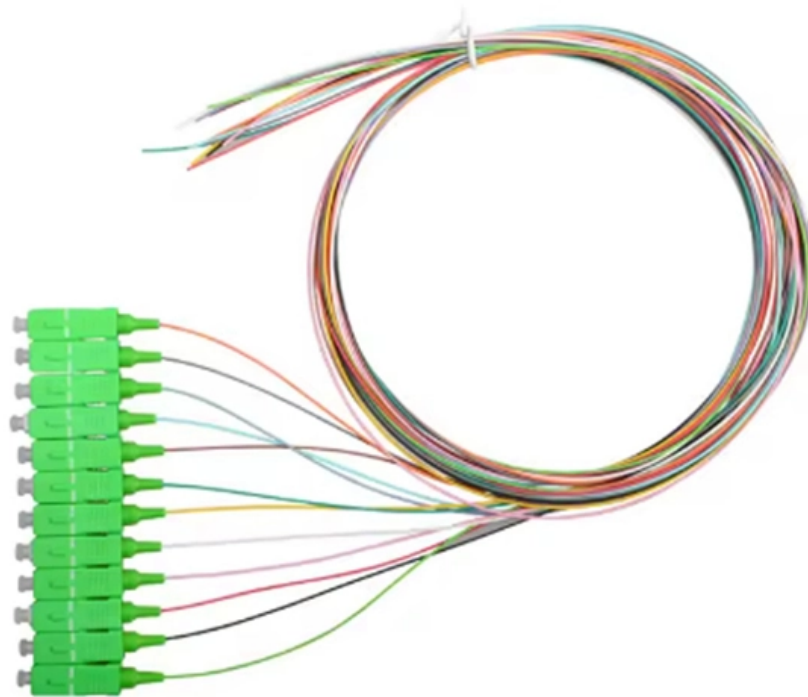


# **Adding a switch to a PoE switch**





## Adding a switch to a PoE switch

---

### How to Connect a PoE Switch to a Normal Switch: A

Power over Ethernet (PoE) Switch are at the core of the modern-day network configurations, to enable an effortless integration of both the power and

[Read More](#)

### Quick Ways to Add PoE (Power over Ethernet) to Home

There are endspans (router, Ethernet switch, PoE switch, PoE NVR) and midspans PSE (PoE injector, PoE splitter). PD -It generally implies the

[Read More](#)



## 5 Tips On Adding New PoE Switch

You might consider adding a new PoE switch when expanding network ports for installing IP devices, such as IP cameras, and wireless access points. In this vi

[Read More](#)

## How to Add PoE to Your Network?

How to add PoE to your network by PoE switch? Just connect it to other network devices, and the switch itself will figure whether they are PoE

[Read More](#)

## 5 Easy Steps to Install Your PoE Switch

In conclusion, installing a PoE switch doesn't have to be complicated. Follow these five easy steps to install your PoE switch and ensure that your

[Read More](#)



## PoE Switch Setup: What Steps You Need to Take

In this video, I explain how to set up a Power over Ethernet (PoE) switch, and I also detail some things to consider when setting up your PoE switch. [more](#)

[Read More](#)

## The Ultimate Guide to Power Over Ethernet Switches:

Discover everything you need to know about PoE switches in our ultimate guide. Learn how Power over Ethernet simplifies network deployment

[Read More](#)

## What is a PoE Switch

A Power over Ethernet switch is a network switch that has PoE functionality integrated.



Learn about different variations, limitations and benefits of

[Read More](#)

## **The best network switch of 2025 , TechRadar**

The best network switch will be a necessity for anyone looking to add more wired connections and gain greater network speeds.

[Read More](#)

## **Comparing PoE vs Non-PoE Switch: Can They Work**

Can PoE and non-PoE switches coexist for seamless network integration? Understand their differences and compatibility, and see why FS PoE

[Read More](#)



## How to Add PoE to Your Network? -- Powerbx, LLC

A PoE switch serves as a central power source, delivering power to multiple devices across the network. For networks with non-PoE switches, a PoE

[Read More](#)

## How To Install PoE Switch

Step 1 Provide power to the switch, if required. For a stand-alone switch, this simply means plugging in the power supply. For rack-mounted switches, this means using a slot that has power supplied to it.

[Read More](#)

## Comparison of PoE Extenders, PoE Injector, PoE

Conclusion In conclusion, this comprehensive guide has illuminated the diverse functionalities and applications of PoE extenders, PoE injectors, PoE

[Read More](#)



## **How to Install IP Camera with POE Switch A Complete**

Installing an IP camera with a PoE switch simplifies setup by delivering power and data over a single Ethernet cable. Just connect the camera to the PoE

[Read More](#)

## **Understanding Power over Ethernet (PoE) and Power over Ethernet Plus (PoE+)**

If your switch or injector is PoE+ capable, your Ring device will automatically detect and draw the appropriate amount of power. What is the maximum cable length for PoE power and data? The

[Read More](#)

## **A Comprehensive guide to PoE Switches and their Uses**



A PoE (Power over Ethernet) switch is a network switch that delivers both power and data through a single Ethernet cable to connected devices such as IP cameras,

[Read More](#)

## **PoE switch for IP cameras**

Add this powerful 16-channel PoE+ switch to expand your network security system. Whether you wish to add more distance to your IP security cameras or simply

[Read More](#)

## **How To Configure PoE On A Network Switch?**

Configuring PoE (Power over Ethernet) on a network switch enables you to deliver power and data simultaneously to compatible devices. This simplifies installation and management of

[Read More](#)



## **How to Connect a PoE Switch to a Normal Switch: A**

When you connect a PoE Switch to a normal switch, you are simplifying network expansion by leveraging the flexibility of Power over Ethernet technology.

[Read More](#)

## **PoE Switch Tutorial: Simplifying Network Power**

PoE switches have become increasingly popular in both residential and commercial settings due to their convenience and efficiency. A PoE switch

[Read More](#)

## **How to Power Your Devices with PoE: A Guide to Injectors, Switches**

This guide explores the core components that make PoE possible, including injectors, switches and splitters. You'll learn how each one works, when to use them and how to



choose the

[Read More](#)

## **Can you use a POE switch with another POE switch?**

Modern poe switches can detect the type of connections they get. Older versions weren't as smart and could toast a none poe device (including

[Read More](#)

## **Using POE switches to reduce cabling**

Using POE Switches on our Admiral Line (POE NVRs with a Single Nic) Most POE NVRs, including our Admiral Line also have a subnet - the POE ports. These ports also hide your cameras from the

[Read More](#)



## **MS210 Overview and Specifications**

Overview Cisco Meraki MS210 stackable switches provide basic Layer 3 connectivity ideal for branch and campus deployments. The MS210 series features a variety of power options designed to meet

[Read More](#)

## **Power over Ethernet (PoE) 101: Your Wi-Fi's Best Friend**

Power over Ethernet, or PoE, eliminates the need for an electrical outlet to make expanding your network an easy job. Find out how it works!

[Read More](#)

## **Power over Ethernet (PoE) Device Installation**

Connect the PoE-enabled devices to the PoE switch or injector using standard Ethernet cables (Cat5e, Cat6, or Cat6A). Ensure the cables are securely



[Read More](#)

## Contact Us

---

For datasheets, pricing, or custom data center infrastructure solutions, please visit:  
<https://zeldaterblanchephotography.co.za>