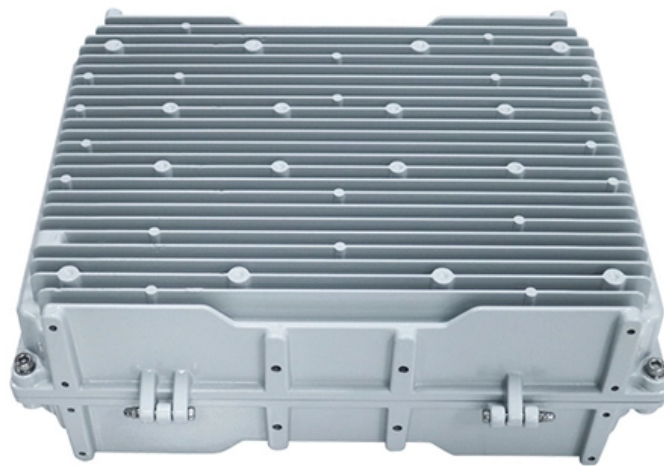


Are industrial switches used for environmental monitoring





Overview

By connecting environmental monitoring devices such as temperature and humidity sensors and gas sensors, industrial switches can collect environmental parameters in real time, transmit and analyze data, and provide important basis for environmental protection and disaster warning. Industrial switches can support multiple data acquisition methods, such as sensors, cameras, etc. In critical industries across the science and manufacturing fields, the sensors used in environmental monitoring play a key role in ensuring compliance, product integrity, and safety.



Are industrial switches used for environmental monitoring

Industrial Switches Assist In Environmental Monitoring

This article will delve into the application of industrial switches in environmental monitoring, explore how they can improve monitoring efficiency, data accuracy,

[Read More](#)

10 Types Environmental Sensors List and Used

Due to the different places of environmental monitoring, there are various types of environmental sensors. Accuracy, sensitivity, and price are all

[Read More](#)



Industrial Ethernet Switches Assist In Environmental

This article will delve into the application of industrial Ethernet switches in environmental monitoring, explore how they can improve monitoring efficiency,

[Read More](#)

Environmental Monitoring Sensors For Critical Industries

Read our guide to sensors used in environmental monitoring across critical industries, detailing temperature, gas, pressure, and specialty sensor

[Read More](#)

3BL

We've helped over 1,500 organizations build stronger communications and distribute their stories on credible publishers that drive reputation.

[Read More](#)



What is an industrial switch and its applications

Today industrial switch plays a significantly important role in various industries such as energy, environmental protection, transportation, smart city surveillance, etc.

[Read More](#)

Application scenarios of industrial switches in multiple industries

Whether in the fields of industrial automation, IoT, intelligent transportation, energy, environmental monitoring, etc., industrial switches provide solid support for various networking applications with

[Read More](#)

Role of Environmental Sensors in Environmental Monitoring Systems



These sensors are used in various applications, including environmental monitoring, industrial noise control, smart cities, and consumer electronics. Noise sensors operate by converting sound waves

[Read More](#)

A Guide to Environmental Monitoring

What is Environmental Monitoring? Environmental monitoring is the process of collecting data related to environmental conditions to assess

[Read More](#)

Environmental monitoring and control in industrial control

In conclusion, environmental monitoring and control are critical aspects of industrial control that help ensure the safety of workers, protect the environment, and comply with regulatory

[Read More](#)



Types of Environmental Sensors and Their Applications -

Explore the essential types of environmental sensors -- temperature, humidity, air quality, water quality, and motion -- and how IoT-powered sensing technology is transforming environmental

[Read More](#)

What is Industrial Environmental Monitoring and How to

At its core, environmental monitoring in industrial plants refers to continuously assessing environmental factors such as air quality, temperature, humidity, gas

[Read More](#)

5 Types Of Environmental Monitoring



Environmental monitoring uses tools that identify and analyze environmental conditions to assess the impact an activity has on the

[Read More](#)

Industrial Sensors and Switches: Complete Guide to Automation

Industrial sensors are designed for high reliability, durability, and continuous operation in harsh environments. What Are Industrial Sensors? Industrial sensors are devices that detect physical

[Read More](#)

Industrial switches are used in extreme environments

In order to ensure the stable operation of industrial switches in extreme environments, the following are some application strategy recommendations: Reasonable selection of equipment models: According

[Read More](#)



What Is a Smart Environmental Monitoring? - IT

What is environmental monitoring? Environmental monitoring involves the capture of any type of data that contributes to showing how the world around us behaves,

[Read More](#)

Why Level Switches Are Essential for Remote

Level switches are indispensable for remote monitoring systems operating in harsh environments. They provide critical data for maintaining

[Read More](#)

Can industrial switches operate in harsh environments?

Unlike standard commercial-grade switches, which are intended for use in controlled indoor environments, industrial switches are engineered to withstand extreme



[Read More](#)

Artificial intelligence and IoT driven technologies for environmental

The increasing advancements in information technology have led to a growing interest in utilizing this technology for environmental pollution detection. AI-driven sensor systems, AI and

[Read More](#)

Application scenarios of industrial switches in multiple industries

By connecting environmental monitoring devices such as temperature and humidity sensors and gas sensors, industrial switches can collect environmental parameters in real time, transmit and analyze

[Read More](#)



What Types of Environmental Sensors Are There?

Environmental sensors are powerful tools for monitoring and protecting both natural and artificial environments. They are widely used in air

[Read More](#)

Switches and Sensors - Working Principles,

Switches and sensors are integral components in various industrial and consumer applications, playing a crucial role in controlling processes, monitoring systems,

[Read More](#)

Application scenarios, precautions and requirements of industrial switches

Industrial switches have a wide range of application scenarios and important value in the field of industrial Internet of Things. During use, it is necessary to pay attention to issues



such as

[Read More](#)

Overview of Environmental Sensors: Types and Solutions

Recommended reasons Gas sensors are widely used in environmental safety monitoring, capable of detecting harmful gases such as CO, NO₂, SO₂,

[Read More](#)

An A to Z of Environmental Sensors

Environmental sensors assess air and water quality, aiding research and compliance while integrating AI and IoT for improved data analysis and

[Read More](#)



How can industrial switches cope with harsh outdoor

In practical applications, even at a distance of only a few meters from high-voltage substations, industrial switches can stably transmit data, ensuring

[Read More](#)

Environmental Sensors; Comprehensive Guide 2024

Environmental Regulation Compliance: Sensors help industries and governments monitor emissions and ensure compliance with environmental

[Read More](#)

Deployment strategy of industrial switches in remote industrial

January 8, 2025 Deployment strategy of industrial switches in remote industrial monitoring networks In the rapid development of modern industrial Internet of Things IIoT, remote industrial monitoring

[Read More](#)



IoT-Based Environmental Monitoring: Types and Use Cases

IoT-based environmental monitoring and clean technology support the detection of harmful pollutants and other environmental hazards,

[Read More](#)

Contact Us

For datasheets, pricing, or custom data center infrastructure solutions, please visit:
<https://zeldaterblanchephotography.co.za>