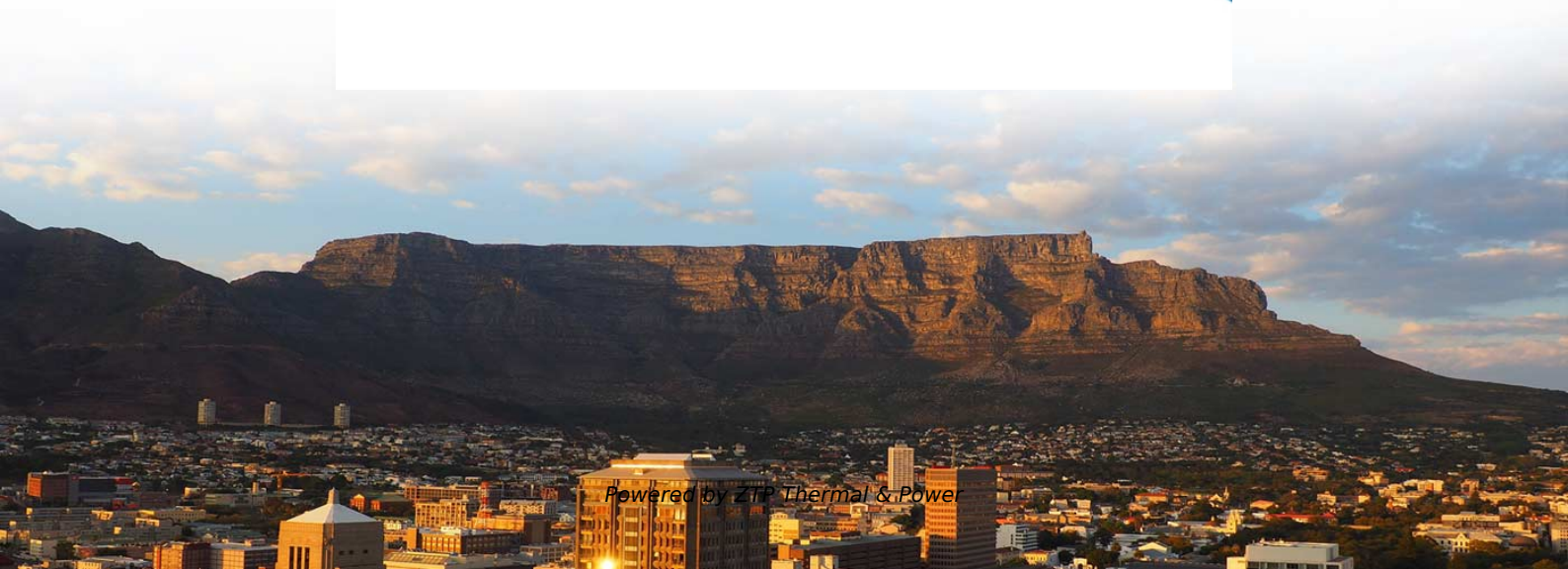
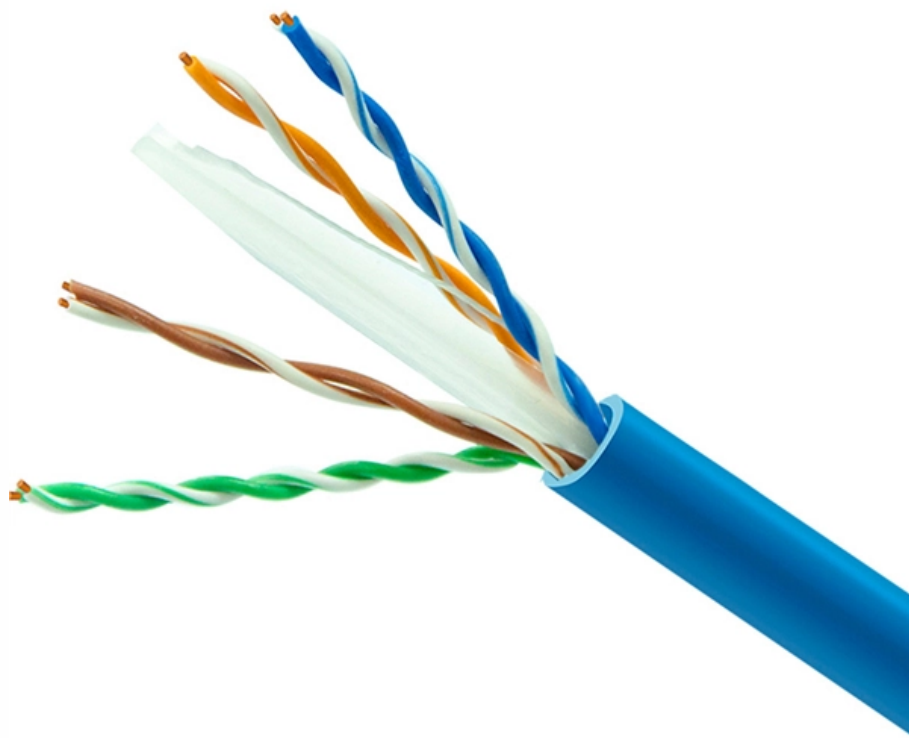


# **Can power strips be used in the electrical distribution box at the construction site**





## Overview

---

There we can see that power strips are intended only for indoor use, and never for use on construction sites and similar locations. A power strip is a block of electrical sockets that attaches to the end of a flexible cable, allowing multiple electrical devices to be powered from a single electrical socket. One nationally recognized testing laboratory, Underwriters Laboratories (UL), refers to power strips as Relocatable Power Taps (RPTs) and, in its "General Information for Electrical Equipment Directory" (sometimes called the UL white book or UL Directory), describes RPTs as "relocatable multiple. However, exposure to weather, frequent relocation, rough use and other conditions not normally encountered with conventional wiring systems necessitate special consideration not require in other applications or in completed structures. Unlike residential or industrial panels designed for long-term installations, these boards are built for mobility, durability, and flexibility.



## Can power strips be used in the electrical distribution box at the co

---

### **Construction Site Distribution Board**

That's where a construction site distribution board comes into play. Often overlooked until something goes wrong, this key piece of equipment ensures that power is

[Read More](#)

### **Power Strips: Their Uses and Hazards**

Inspectors may encounter these on the job while inspecting older homes that lack enough permanent electrical wall receptacles for the needs of today's families.

[Read More](#)



## **Electrical Installations at Construction Sites**

Setting up power on a construction site, especially in rural or challenging locations, is not a straightforward task. While the local electrical company may assist temporarily, a trained electrician's

[Read More](#)

## **Electrical Installations at Construction Sites**

A construction site has special electrical requirements. Not every electrical firm will provide such services since there are special standards to uphold and legal

[Read More](#)

## **Temporary Power Construction Site Guide: Industrial Plug Sockets,**

Discover how to supply temporary power safely on construction sites using E-abel distribution boxes, industrial plug sockets, and IP67 connectors for reliable outdoor electricity.



## **Safety tips for your power strips**

Safety tips for your power strips Even everyday electrical equipment like power strips can be a safety risk when not maintained or used properly. The Electrical Safety

[Read More](#)

## **Power supply on the construction site**

It is therefore important that the power distribution board on a construction site has at least an IP55 protection class to ensure that the unit functions well in a harsh environment such as a construction site.

[Read More](#)

## **Why can't we use power strips on the job site?**



UL also specifies that RPTs are not intended for use at construction sites and similar locations. Power strips are designed for use with a number of low-powered loads, such as

[Read More](#)

## **Electrical safety in the construction industry**

Electrical hazards on construction sites can put workers at risk of injury or death. Learn how to control electrical risks on construction sites, fulfil your legal obligations and keep yourself and

[Read More](#)

## **Toolbox Talk: Power Strip Uses & Hazards**

A power strip is a block of electrical sockets that attaches to the end of a flexible cable, allowing multiple electrical devices to be powered from a single

[Read More](#)



## **Power Distribution Boxes Explained Simply**

Discover the essentials of a Power Distribution Box--how it works, key types, benefits, and tips to ensure safe, efficient electrical power management.

[Read More](#)

## **Why can't we use power strips on the job site?**

I know most of the "power strips" are far less expensive, but we are obligated to understand and know the limits and restrictions of any piece of equipment we decide to use on our

[Read More](#)

## **Temporary electrical wiring for construction sites**



work requires electrical power for many purposes. However, exposure to weather, frequent relocation, rough use and other conditions not normally encountered with conventional wiring systems

[Read More](#)

## **Construction Site Temporary Supply , 110V Guide UK , Elec-Mate**

Construction Site Temporary Supply: The Complete 110V Guide for UK Sites Construction site temporary installations must use 110V CTE for portable tools, IP-rated distribution

[Read More](#)

## **Electrical Installations On Construction Sites**

Practical guidance Electrical hazards are a major cause of death and serious injury on construction sites. This industry standard provides practical

[Read More](#)



## **Hotels, Accommodation & Cheap Hotel Deals , Book at Expedia site**

How can I explore different star-rated accommodations and accommodation brands? If you like to stay in a specific hotel, type the

[Read More](#)

## **Electrical practices -- construction and demolition sites**

A cord extension set must not to be joined so that the total length of any combination exceeds the relevant maximum value specified in table one. Note: Electrical

[Read More](#)

## **Distribution boards components**

Distribution boards (generally only one in residential premises) usually include the meter



(s) and in some cases (notably where the supply utilities impose a TT earthing system and/or tariff

[Read More](#)

## **Panelboards and Distribution Panels: What They Are**

Introduction Navigating the world of electrical distribution can be confusing, with terms like panelboard, switchboard, and distribution box often

[Read More](#)

## **Power strip**

Power strips are often used when many electrical devices are in proximity, such as for audio, video, computer systems, appliances, power tools, and lighting. Power

[Read More](#)



## Requirements And Specifications For Installation Of

Inflammable and explosive environments, explosion-proof distribution boxes should be selected and explosion-proof treatment should be carried out.

[Read More](#)

## Top Necessities For Proper Construction Site Power

Temporary power distribution is commonplace on most construction sites, driven by the need to supply convenient portable power access for a wide

[Read More](#)

## Contact Us

---

For datasheets, pricing, or custom data center infrastructure solutions, please visit:  
<https://zeldaterblanchephotography.co.za>