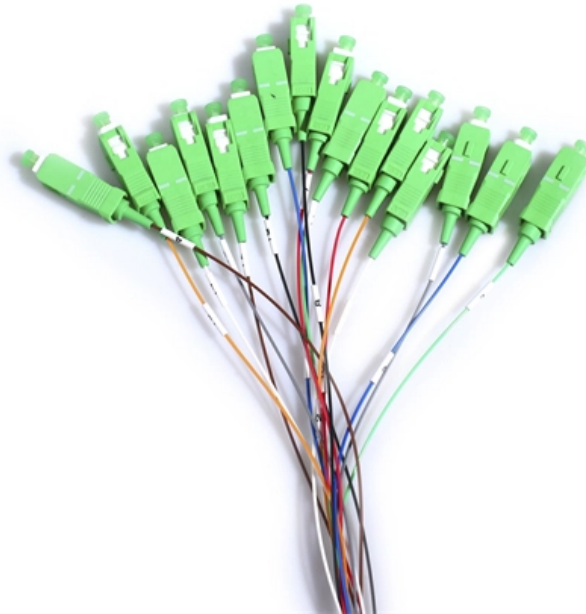


# **Does anyone want to buy a 1 25G optical module**





## **Does anyone want to buy a 1 25G optical module**

---

### **Shining Fiber 1.25G SFP Module: Power-Efficient and**

All modules satisfy class I laser safety requirements. The transceivers are compatible with SFP Multi-Source Agreement (MSA) and SFF-8472. For further information,

[Read More](#)

### **Hanutech 1.25G DDM SMSF Bi-Directional SFP Module**

Amazon: Buy Hanutech 1.25G DDM SMSF Bi-Directional SFP Module 1310/1550nm 40KM Optical Transceiver, 1 Pair online at low price in India on

[Read More](#)



## **SFP Optical Module 1.25G 20km single-mode duplex-LC**

This is a industrial SFP optical module. It uses duplex single mode optical fiber and the speed rate can up to 1.25Gbps, transmission distance up to 20km.

[Read More](#)

## **Why Is the 1.25G Optical Transceiver Module Still Vital?**

Discover why the 1.25g optical transceiver module remains the backbone of enterprise networks. Learn about SFP standards, distance reach, and compatibility.

[Read More](#)

## **1.25G Gigabit SC single-mode single-fiber 3/20KM**

Buy 1.25G Gigabit SC single-mode single-fiber 3/20KM optical module online today!  
[Product Name] Gigabit Single Mode Single Fiber Optic Module [Product Model]

[Read More](#)



## **MaxLink 1.25G SFP optical module, WDM (BiDi), SM,**

WDM SFP modules use 1 optical fiber for two-way connection, so you are able to double capacity of your optical cable without changing the cable. SFP module

[Read More](#)

## **1.25G SFP**

Common optical modules currently on the market can be classified according to transmission rate into 1.25G, 10G, 16G, 25G, 32G, 40G, 56G, 100G, 200G,

[Read More](#)

## **Conexpro 1.25G SFP optical module, WDM/BiDi, SM,**

GigabitWDM/BidiSinglemodeSFPmodulefromConexpromanufacturerwithwavelength



(Tx/Rx) 1310/1550nm, speed 1 Gbps is equipped with one SC connector with UPC grinding and is intended

[Read More](#)

## **1G/1.25G SFP Optical Transceiver Modules, Fiber Optic**

GLSUN 1G/1.25G SFP Fiber Optical Transceiver Modules are compatible designed to transmit and receive optical data by Gigabit Ethernet and 1G Fibre Channel over SMF/MMF fiber for internet

[Read More](#)

## **1.25G 1310nm 10KM SFP Module**

1.25GsfpModules1310nm10KMLCDualFiberOpticTransceiverCompatibleWithCisco Huawei HP Description The SFP transceivers are high performance, cost

[Read More](#)



## **25G SFP28 Optical Transceiver , Fiber Optic Module Factory**

How does a 25G transceiver module differ from other optical form factors? A 25G transceiver module like SFP28 combines the compact size of SFP with upgraded electrical and optical interfaces for 25

[Read More](#)

## **1.25G LC Single-mode-fiber-coupled Optical Transceiver Modules**

Experience effortless network speeds with our 1.25G single-mode-fiber-coupled optical transceiver modules. Perfect for 15km LC setups.

[Read More](#)

## **Cisco SFP-25G-LR-S Compatible SFP28 Module,**

Cisco SFP-25G-LR-S Compatible SFP28 Module, 25Gbps Single Mode Fiber (SMF), 10km



(6.2mi), LC Connector, 1310nm, MSA 25 Gigabit Optical Transceiver

[Read More](#)

## **1.25G SFP 550m~120km Optical Modules (Industrial**

Gigalight's 1.25G SFP series transceiver modules are widely utilized in Gigabit Ethernet, concurrently compatible with 1G Fiber Channel and Synchronous

[Read More](#)

## **1.25G Single Mode Single Fiber Optical Transceiver**

Reliable 1.25G single mode single fiber optical transceiver with SC connector and 20km transmission distance. Ideal for long-distance fiber communication networks.

[Read More](#)



## **1.25Gbps 140km Optical Transceiver SFP Module**

Description The SFP transceivers are high performance, cost effective modules supporting dual data-rate of 1.25Gbps/1.0625Gbps and 140km transmission

[Read More](#)

## **Syrotech SFP 1.25G 120KM BiDi Single Mode Fiber**

BIDI-1.25G-SFP-120-BDSFP Single Fiber optical transceiver is multi-purpose module used in number of different places of today's networking. Consequently,

[Read More](#)

## **1.25G LC Single-mode-fiber coupled Optical Transceiver Modules**

However, for 90% of B2B applications, the 1.25G sfp module optical provides the perfect sweet spot of performance and price. When you buy our single-mode-fiber coupled optical transceiver modules, you

[Read More](#)



## **Hanutech 1.25G DDM SFP Module Optical Transceiver**

Hanutech 1.25G DDM SFP Module Optical Transceiver LC Optical Interface 1310/1550nm  
SMSF 40KM : Amazon : Computers & Accessories Hanutech

[Read More](#)

## **1.25G SFP Module, Single Mode SC, TX1550nm/RX 1310nm , Elfcam**

This optical module offers a reliable and durable solution for professional installations.  
Designed for fiber optic technicians and demanding network environments.

[Read More](#)

## **1.25G 1310nm 20KM 40km sfp optical transceiver sfp**



1.25G 1310nm 20KM 40km sfp optical transceivers sfp module LC connector The SFP-BIDI transceivers are high performance, cost effective modules supporting

[Read More](#)

## **SFP28 25G SR Optical Modules: High-Performance Network Solution**

SFP28 25G SR optical modules provide a high-performance, cost-effective, and scalable solution for modern networking. Designed for short-distance high-speed data transmission, they are essential in

[Read More](#)

## **SFP Optical transceiver Module 1.25G**

Description: The 1.25G SFP optical module is Small Form Factor Pluggable (SFP) transceivers are compatible with the Small Form Factor Pluggable Multi-Sourcing Agreement (MSA).

[Read More](#)



## 1.25G Fiber Optical Module 1310/1550nm 3/20KM Single-Mode SC

Dual-wavelength multiplexing single-fiber transceiver module, transmitter and receiver work independently. Save fiber resources: single-fiber module design, significantly reduce the cost of

[Read More](#)

### Contact Us

---

For datasheets, pricing, or custom data center infrastructure solutions, please visit:  
<https://zeldaterblanchephotography.co.za>