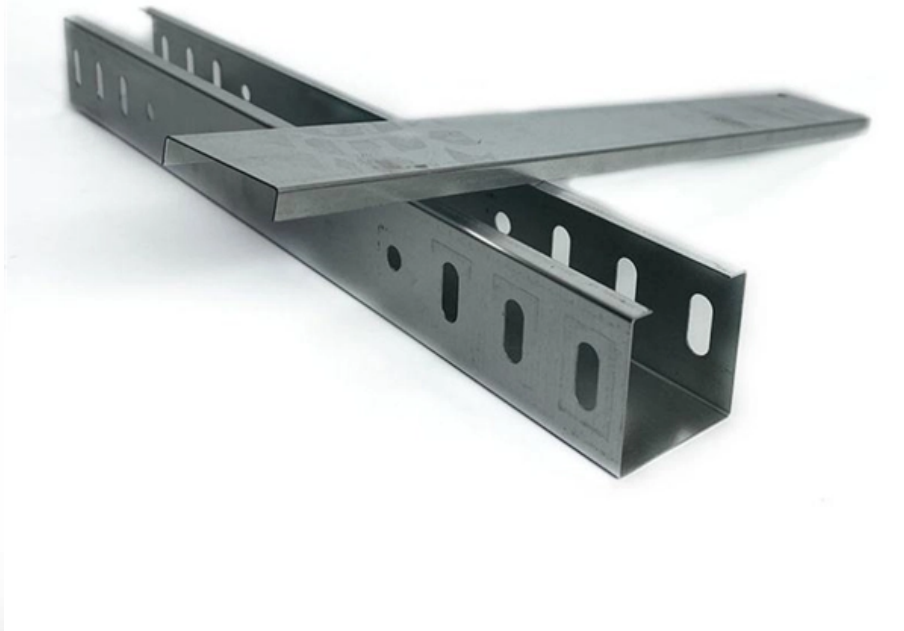


# How many kilometers can a 10km optical module be used for at most





## Overview

---

Long-distance variants, typically referred to as LX, EX, ZX, or ER/LR SFPs, are engineered with higher optical power budgets and longer wavelength lasers (e. , 1310nm, 1550nm), enabling transmission distances from 10 km up to 80 km or more over single-mode fiber (SMF). SFP (Small Form-factor Pluggable) modules are standardized network transceivers that support a range of data rates (1G, 10G, 25G) and fiber types. But even at that there are specialized modules that can go even further There are different types of SFP transceiver, two. The fiber optic length, connector quality, cleanliness, and proper handling often determine whether a connection is stable or problematic. In this article Cisco SFP-10G-LR module is based on EDGE Optic's part numbers 10G-SFP-10 (10km version) and 10G-SFP-20.



## How many kilometers can a 10km optical module be used for at most

---

### What is the maximum distance for SFP?

The maximum distance for an SFP (Small Form-Factor Pluggable) transceiver depends on the type of SFP module, the optical fiber used, and the specific application. SFP modules support a

[Read More](#)

### IM282A-L - 10KM LONG RANGE RADIO MODULE

Things have changed and company IMST came up with the new type of radio chip SX1280 which can work on 2.4GHz band and decided to use this

[Read More](#)



## **SFP Distance Explained: Real-World Range, Limits, and Optics**

SFP distance refers to the maximum effective range over which an SFP optical module can transmit data while maintaining signal integrity. It is typically measured in kilometers (km) for

[Read More](#)

## **SFP+10G 1310nm 10Km LC Optical Module Guide**

Understanding SFP+ optical modules and their different types helps in selecting the right transceiver for your network needs. The detailed specifications and

[Read More](#)

## **BlueOptics 10G SFP+ Transceiver , How to Achieve Maximum Distance!**

Anyone who works with 10G SFP+ transceivers knows that the achievable distance depends on far more factors than just the module used. The fiber optic length, connector quality, cleanliness, and



[Read More](#)

## **Nokia 10G 10KM SFP+: The Ultimate 10GBASE-LR Guide**

Nokia's adherence to the SFF-8431 and SFF-8432 MSA standards guarantees that their 10G 10KM optics can physically plug into, and electrically communicate with, any standard SFP+ port.

[Read More](#)

## **Learn how to choose the right SFP module for your network. Avoid**

How to Choose the Right SFP Module (Without Overpaying or Failing Later) Choosing the wrong SFP module is one of the most common and expensive mistakes in network deployment.

[Read More](#)



## **QSFP28 Module Types: SR4, LR4, CWDM4 & Single-Lambda**

Compare all QSFP28 module types: SR4, LR4, CWDM4, PSM4, ER4, ZR4, and single-lambda DR1/FR1/LR1. See real pricing, link budgets, and a selection framework.

[Read More](#)

## **unsupervised\_topic\_modeling/topics/en/17/100/100/topics at**

Contribute to an open source topic model/unsupervised\_topic\_modeling development by creating an account on GitHub.

[Read More](#)

## **Reach Further, Faster: Your Ultimate Guide to Long-Range 10G Optical**

? Why Choose a Long-Range 10G Optical Module? The Key Benefits While short-reach modules exist for in-rack connections, long-range 10G SFP+ modules are engineered for more



## **What is the longest transmission distance of a 10G**

The conservative design constraints we used to use was 1,000m for MM fiber and 60km for SM fiber as a max. The laser's ability to transmit is

[Read More](#)

## **10G SFP+ ZR 100km**

o Supports from 1.2Gb/s to 11.3Gb/s bit rates  
o Compliant with IEEE 802.3ae  
o Compliant with 10G FCo  
o Compliant with SFF-8431  
o Hot-pluggable SFP+ footprint  
o 1550nm EML laser transmitter and APD

[Read More](#)

## **What Is 10GBASE-LR? SMF 1310nm 10km SFP+ Explained**



10GBASE-LR is a 10-gigabit Ethernet optical standard that operates at 1310 nm over single-mode fiber (SMF), supporting link distances of up to 10 km. It is typically implemented using SFP+ transceivers

[Read More](#)

## **Single Mode vs Multimode Fiber, What is The**

Learn the key differences between single mode vs multimode fiber cables and choose the right one for your fiber optic system.

[Read More](#)

## **Cisco SFP-10G-LR Module: 10km Range & Specifications**

Cisco SFP-10G-LR module is capable of working with a link length of up to 10 km on any basic single-mode fibre. It complies with the 10GBASE-LR standard and uses 1310nm lasers.

[Read More](#)



## **Introduction and Application of SFP-10G-SR and SFP-10G-LR**

The SFP-10G-LR optical module is characterized by compact size, low power consumption and long transmission distance. It is ideal for medium-to-long-haul applications,

[Read More](#)

## **What Is 10GBASE-LR? SMF 1310nm 10km SFP+ Explained**

10GBASE-LR is a 10-gigabit Ethernet optical standard that operates at 1310 nm over single-mode fiber (SMF), supporting link distances of up to 10 km.

[Read More](#)

## **SFP Optical Transceiver Modules for Long Distance: A**



Discover everything you need to know about SFP optical transceiver modules for long-distance fiber transmission. Compare LX, EX, ZX models and

[Read More](#)

## **What is the maximum distance for 10G SFP?**

The maximum distance for a 10G SFP (small form-factor pluggable) transceiver can vary depending on the type of fiber optic cable being used. However, in general, the maximum distance

[Read More](#)

## **Comprehensive Guide to FS 10G BiDi SFP Modules**

Optimize your fiber utilization with FS 10G BiDi SFP+ modules. Single-fiber 10G transmission, lower costs, high compatibility--ideal for data

[Read More](#)



## **10G Optical Modules: Short-Range vs. Long-Range Comparison Guide**

A 10G SFP+ LR module, for instance, can support links of up to 10 kilometers. These modules are well-suited for interconnecting buildings, campus networks, or metropolitan area

[Read More](#)

## **Enabling Long-Reach 10G Connectivity: The 80km**

In today's data-driven world, the demand for high-speed, reliable, and long-distance optical connectivity continues to grow. The CC-PII448L-xD 10Gb/s

[Read More](#)

## **SFP+10G 1310nm 10Km LC Optical Module Guide**

The SFP+10G 1310nm 10Km LC optical module is a powerful and versatile solution for



high-speed, long-distance data transmission. Understanding SFP+ optical

[Read More](#)

## **SFP Module Introduction: SFP meaning, Fiber SFP and**

BiDi SFPs use simplex LC connectors and others use duplex LC connectors. The max transmission distance of the fiber SFP optical module can reach up to

[Read More](#)

## **BlueOptics 10G SFP+ Transceiver , How to Achieve Maximum Distance!**

In this article, we'll show you 10 simple, effective rules to help you get the maximum range from your SFP+ connections: choosing the right module, and fiber, as well as clever network planning.

[Read More](#)



## Fiber-optic cable

Ribbon-type fiber-optic cables can house many more fibers than loose-tube types. For use in more strenuous environments, a much more robust cable construction

[Read More](#)

## using SMF 20KM reach SFP instead of already existing 10KM reach

? 06-24-2020 07:38 AM I haven't double checked, but I recall only the 80 KM optics really should have attenuation when being used under certain distances. Of course, for the lesser optics, there still

[Read More](#)

## Guide to 10G BiDi SFP+ Optical Transceivers Modules(2025)

How does the Fibrecross 10G BiDi SFP+ module provide 10Gb/s speed through single-



mode fiber and support a transmission distance of up to 80 kilometers.

[Read More](#)

## Contact Us

---

For datasheets, pricing, or custom data center infrastructure solutions, please visit:  
<https://zeldaterblanchephotography.co.za>