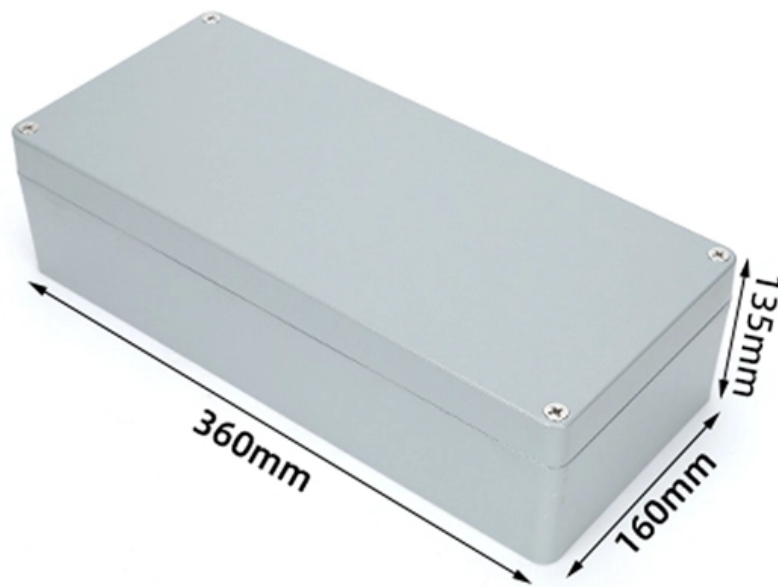


# How to ground a distribution box that has no grounding pin





## Overview

---

The most common and simplest solution for an ungrounded circuit is to install a Ground-Fault Circuit Interrupter (GFCI) device. Electrical grounding is a fundamental safety mechanism that provides a low-resistance route for fault current to return to the source and trip a circuit breaker or fuse. This pathway prevents metal casings of appliances and tools from becoming energized with hazardous voltage during an internal. Especially for low-power devices, such as routers, mobile phone chargers, small lamps, and so on. I am exploring a way to install an outdoor outlet out of my main electrical panel but I couldn't find any visible ground bar (s) that the ground wires (in green color) can connect to, nor do I see a ground wire somewhere attached to any bars at all other than one that got attached to a bonding. It's a common scenario that can leave even the most seasoned DIY enthusiasts scratching their heads. That little red tail under the cable clamp means you have BX or MC feeding that box, that metal jacket is your ground.



## How to ground a distribution box that has no grounding pin

---

### Grounding System Installation Standards for Distribution Boxes and

Hey there! If you're working with electrical systems, you know that grounding isn't just some bureaucratic requirement--it's literally the difference between a safe, functional system and a potential disaster.

[Read More](#)

### Where to Connect a Ground Wire If No Ground Is Present

Measure between the "hot" (smaller slot) and the "neutral" (larger slot); this should read approximately 120 volts. Next, measure the voltage between the hot slot and the ground pin. A

[Read More](#)



## **How To Ground A Circuit Breaker Box Safely: A Step-by**

However, for experienced DIYers, this guide provides a detailed, step-by-step approach to ensuring your circuit breaker box is properly grounded,

[Read More](#)

## **How To Run A Ground Wire To An Electrical Panel Box**

Your service panel's ground wire prevents a line fault from becoming a shocking experience. By shunting excess line voltage back to the panel's neutral pole, the ground current

[Read More](#)

## **Grounding System Installation Standards for Distribution Boxes and**

Whether you're a seasoned pro or just starting out, this comprehensive guide will give



you practical insights into proper grounding techniques, with a special focus on how selecting quality materials

[Read More](#)

## **How to Ground an Outlet That's Ungrounded**

If your home was built before the 1960s, you might still have some old two-prong ungrounded outlets. The correct name for an ungrounded outlet is a

[Read More](#)

## **What to Do with Ground Wires If There is No Ground Terminal?**

I am exploring a way to install an outdoor outlet out of my main electrical panel but I couldn't find any visible ground bar (s) that the ground wires

[Read More](#)



## What to Do with the Ground Wire if There's No Ground

Either install a GFCI receptacle, which is a solid choice for protection despite not adding ground, or run a new cable with a ground wire. I've done both,

[Read More](#)

## No ground wire in electrical box (very old building)

Put a ground pigtail with a 10-32 ground screw in the back of the box and tie your ground wire to that.. It's a self grounding device (meaning if the box is screwed

[Read More](#)

## directory-list-2.4.txt/directory-list-2.4.txt at main

Customer stories Events & webinars Ebooks & reports Business insights GitHub Skills

[Read More](#)



## LearnEMC

Grounding Proper grounding is an important aspect of electronic system design for both safety and electromagnetic compatibility. Ground plays a crucial role in

[Read More](#)

## CMU School of Computer Science

çç-- bowls èì~ bowls ç¥"æ^ì box ç>'å box ç>'å boxes ç®± boxes æ½æoe¯ boxing ç"·å© boy å©å boy ç"·å

[Read More](#)

## Correct Connection Method Of Grounding Wire Of

Following the above steps and precautions can ensure the correct connection of the



distribution box grounding wire, thereby ensuring the safe

[Read More](#)

## **DISTRIBUTION BOX**

Each DISTRIBUTION BOX and controller must be grounded. On the US market, a 5.26 mm<sup>2</sup> (10 AWG) ground wire must be used, and in all other markets a 6 mm<sup>2</sup> must be used.

[Read More](#)

## **How To Ground An Electrical Panel: 8 Steps With Video**

Electrical panel grounding is one of the most important factors regarding electrical safety. While a ground wire is not strictly necessary for

[Read More](#)



## **What to Do if There Is No Ground Wire , What to Do Next?**

If you find there is no ground wire in your electrical system, consider replacing outdated two-prong outlets, installing Ground Fault Circuit Interrupters (GFCIs),

[Read More](#)

## **How to Ground Outlets Without Ground Wires , Angi**

Grounded circuits are happy (and safe) circuits, but what if you live in an older home with pre-grounded receptacles? Here are ways to ground without

[Read More](#)

## **Correct Connection Method Of Grounding Wire Of**



1. Find the grounding bar or PE bar Open the distribution box and find the position marked with the grounding plate or PE letter. This position is the

[Read More](#)

## **How to ground the low voltage distribution box?**

The low-voltage distribution box, as a device for regulating the circuit system, needs to be so. How should the low-voltage distribution box be grounded? Now let's

[Read More](#)

## **How To Ground Your Electrical Panel and Service Disconnect**

Electrical Grounding & Bonding: Top Mistakes to Avoid for a Successful Installation: Don't make common mistakes that can lead to a dangerous electrical system. Follow this video to learn what to



[Read More](#)

## **How Should Ground Wire Be Used If There Is No Ground?**

A ground wire can be connected to an electrical junction box if no place is available for its attachment. After coiling up the ground wire, push it back into the junction box.

[Read More](#)

## **How to Ground an Electrical Panel: A Complete Guide**

Grounding an electrical panel is an important step to keep your home and family safe. It gives extra electricity a safe path to the ground, helping prevent

[Read More](#)



## Where to Connect a Ground Wire If No Ground Is Present

If the receptacle is in a metal junction box and the wiring method is metal conduit, metal-clad (MC) cable, or armored (AC) cable, the metal enclosure itself can serve as the equipment

[Read More](#)

## Electrical Panel Grounding and Bonding

The topic of grounding and bonding is a never ending area of confusion. The difference between a service panel and a sub panel is also muddy in many

[Read More](#)

## Contact Us

---

For datasheets, pricing, or custom data center infrastructure solutions, please visit:  
<https://zeldaterblanchephotography.co.za>