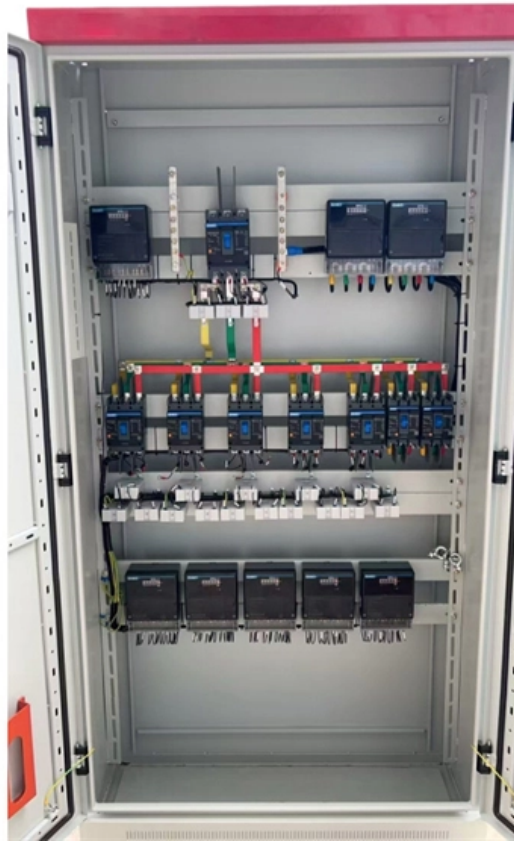


Power Station Relay Protection Instructions





Overview

This handbook covers the code of practice in protection circuitry including standard lead and device numbers, mode of connections at terminal strips, colour codes in multicore cables, dos and donts in execution. Long term cost reduction (TCO) for trainings and maintenance by reduce variety of relays A fast and selective arc fault mitigation for air-insulated LV & MV switchgear and Relion protection and control relays and sensor technology protect staff and plant facilities for many years. Protective relays and devices have been developed over 100 years ago to provide "last line" of defense for the electrical systems. Fingrid's application guideline for relay protection presents the operating principles of the relay protection in Fingrid's 110, 220 and 400 kV power networks and the requirements for operation of the protection systems of Fingrid customers (hereinafter referred to as 'customer'). Please note that this is an advance copy that was used by ABB Substations in Sweden.



Power Station Relay Protection Instructions

Types of Electrical Protection Relays or Protective Relays

Operating Principles: Protective relays operate by detecting abnormal signals, with specific pickup and reset levels to start or stop their action.

[Read More](#)

Protective relay

In electrical engineering, a protective relay is a relay device designed to trip a circuit breaker when a fault is detected. : 4 The first protective relays were

[Read More](#)



POWER SYSTEM PROTECTION RELAYS AND HARDWARE

Protection relays are used in power systems to maximize continuity of supply and are found in both small and large power systems from generation, through transmission, distribution and utilization of

[Read More](#)

Collection_vuSpec

IEEE C37.103TM-2004 (R2010), IEEE Guide for Differential and Polarizing Relay Circuit Testing
IEEE C37.104TM-2012, IEEE Guide for Automatic Reclosing of Circuit Breakers for AC Distribution and

[Read More](#)

Protective Relaying Philosophy and Design Guidelines

Relay settings are chosen to adequately protect the system from electrical faults and other disturbances, which would affect the safe and reliable operation of the power system.



Understanding Protective Relays in Power Systems

Protective relays are critical components in power systems, providing essential protection for various elements such as generator sets, outgoing feeder

[Read More](#)

Microsoft Word

protective relay is the device, which gives instruction to disconnect a faulty part of the system. This action ensures that the remaining system is still fed with power, and protects the system from further

[Read More](#)

Protection Application Handbook



Welcome to the Protection Application Handbook in the series of booklets within the LEC support programme of BA THS BU Transmission Systems and Substations. We hope you will find it useful in

[Read More](#)

Power System Protective Relays: Principles & Practices

Protective relays and devices have been developed over 100 years ago to provide "last line" of defense for the electrical systems. They are intended to quickly identify a fault and isolate it so the balance of

[Read More](#)

Transformer Protection Application Guide

Transformer Protection Application Guide This guide focuses primarily on application of protective relays for the protection of power transformers, with an emphasis on the most prevalent protection schemes

[Read More](#)



How to use Lockout Relay (master trip relay) in

Practical applications of lockout relays on mainstream switchgear and protection and adaptations in modern digital power substations.

[Read More](#)

Power Relays Application Guide

The relays covered by this guide are listed in Table 1 and are all designed to operate at normal rated voltage to detect reverse power or overpower conditions on a power system.

[Read More](#)

Relaying and System Protection for Electric Utilities Volume III: Line



Volume III - Line Protection. This course describes the relaying schemes and processes used to protection transmission lines. Distribution line protection is only briefly covered. Line protection

[Read More](#)

PowerLogic P5 Protection Relay User Manual

This user manual provides detailed information on the PowerLogic P5 Protection Relay by Schneider Electric.

[Read More](#)

Practical Power Systems Protection for Engineers and Technicians

protective relay is the device, which gives instruction to disconnect a faulty part of the system. This action ensures that the remaining system is still fed with power, and protects the system from further

[Read More](#)



Understanding Protective Relays in Electrical Power Systems -

Explore the world of protective relays and their vital role in ensuring the safety and reliability of electrical power systems.

[Read More](#)

Advanced Protective Relay Testing for Substation Techs

Advanced Protective Relay Testing and Calibration for Substation Technicians In the dynamic field of electric power transmission, control, and distribution, the role of the substation technician has evolved.

[Read More](#)

Basic protection relay knowledge

A fast and selective arc fault mitigation for air-insulated LV & MV switchgear and Relion



protection and control relays and sensor technology protect staff and plant facilities for many years.

[Read More](#)

Relay protection of the main grid and customer connections

Fingrid's application guideline for relay protection presents the operating principles of the relay protection in Fingrid's 110, 220 and 400 kV power networks and the requirements for operation of the protection

[Read More](#)

The Role of Protection Relays in Power Systems and an

Protective relays are critical in power systems because they serve as decision-making devices that ensure the safe operation of power grid. They play a key role in power system protection.

[Read More](#)



Protection System in Power System

This portion of our website covers almost everything related to protection system in power system including standard lead and device numbers,

[Read More](#)

Protective Relay Maintenance and Application Guide

When required to operate because of a faulted or undesirable condition, it is imperative that protective relays function correctly. A strong maintenance and test program will ensure protective relays

[Read More](#)

Protective Relay Maintenance and Application Guide

To ascertain current maintenance and testing practices for protective relays, data was



gathered from industry databases, power generating stations, and relay manufacturers.
RESULTS This guide

[Read More](#)

Fundamentals of Modern Protective Relaying

A primary motor protective element of the motor protection relay is the thermal overload element and this is accomplished through motor thermal image modeling. This model must account for thermal

[Read More](#)

FIST 3-8-March 18-2010

The protection system as defined in this volume includes -protective relays, associated communications systems, voltage and current sensing devices, station batteries, and direct current

[Read More](#)



Relay protection of the main grid and customer connections

Introduction Fingrid's application guideline for relay protection presents the operating principles of the relay protection in Fingrid's 110, 220 and 400 kV power networks and the requirements for operation

[Read More](#)

Protective Relaying Principles and Applications

Protective Relaying Principles and Applications The article provides an overview of protective relaying principles and their applications for high-voltage power system

[Read More](#)

Contact Us

For datasheets, pricing, or custom data center infrastructure solutions, please visit:
<https://zeldaterblanchephotography.co.za>