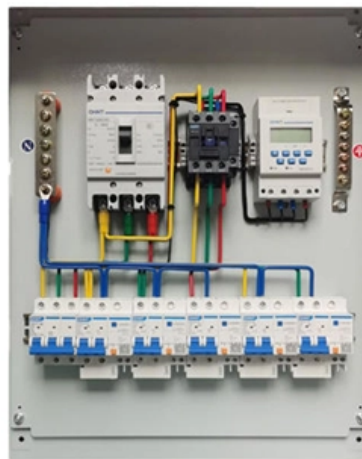


# Which access layer switch is the best





## Overview

---

Pick an access layer switch that (1) offers enough ports for every wired and PoE device you'll add over the next three years, (2) delivers the speed—1 Gbps for general traffic or 10 Gbps for heavy data—to keep users productive, and (3) includes security and management features that. When planning an enterprise access network, one of the most common dilemmas is whether to deploy Layer 2 (L2) or Layer 3 (L3) switches. The access layer plays a critical role in connecting end devices—such as computers, printers, IP phones, and wireless access points—to the rest of the enterprise. Meanwhile, the upper layer connections must be considered in the design of the access layer.



## Which access layer switch is the best

---

### Basics of Computer Networking

Computer network is a collection of interconnected devices that communicate with each other to exchange data and resources. It enables

[Read More](#)

### L2 vs L3 Switch: How to Choose for Your Access Layer

This article breaks down the differences between L2 and L3 switches in the access layer, analyzes key decision factors like network scale and complexity, and finally provides a practical

[Read More](#)



## **WORLD WIDE WEB JOURNAL Home**

will open to start the export process. The process may take but once it finishes a file will be downloadable from your browser. You may continue to browse the DL while the export process is in

[Read More](#)

## **The Network DNA: Networking, Cloud, and Security**

Master networking, cloud, and security with in-depth analysis, tutorials, and research. Stay ahead of the curve with our expert tech blog.

[Read More](#)

## **Understanding Access Switches: Key Components of**

Explore the role of access switches in your LAN setup. Understand their key components, functions in the access layer, and how they integrate into

[Read More](#)



## **Core Switch vs. Distribution Switch vs. Access Switch**

Comprehensive guide to Core, Distribution, and Access Switches. Roles in the network and important parameters explained.

[Read More](#)

## **Access vs. Distribution vs. Core Switch Comparison Guide**

Each layer is served by specialized switches, with the access switch connecting end-user devices, the distribution switch aggregating traffic and enforcing policies, and the core switch acting as the high

[Read More](#)

## **SMB Network Design: Core vs. Distribution vs. Access Switches**



Don't overspend on network hardware. Our expert guide explains core, distribution, and access switches so you can design the right network for your SMB.

[Read More](#)

## **How to Choose the Right Access Layer Switch?**

Let's explore the key factors to consider when selecting an access layer switch. Whether setting up a small office or managing a large enterprise

[Read More](#)

## **L2 vs L3 Switch: How to Choose for Your Access Layer**

When planning an enterprise access network, one of the most common dilemmas is whether to deploy Layer 2 (L2) or Layer 3 (L3) switches. The access layer plays a critical role in

[Read More](#)



## **L1 vs L2 vs L3 Switches: Key Differences Explained**

Confused between L1, L2, and L3 switches? Learn the key differences, features, and use cases to pick the right one for your network needs.

[Read More](#)

## **ETN News , Energy Storage News , Renewable Energy**

ETN news is the leading magazine which covers latest energy storage news, renewable energy news, latest hydrogen news and much more. This magazine is

[Read More](#)

## **What is an access switch and how to select access switches?**

What is an access switch? Learn the features and applications, and know how to select the right access switch for your network needs. Ruijie Networks' access switches here for you.



## **What are you guys using for access layer switches?**

We're a Cisco environment with 50% of switching being relatively modern UADP (3650 3850 and 9300) and the rest being 3560 and 3750 first generation and X series desperately needing replacement

[Read More](#)

## **Buy it in ChatGPT: Instant Checkout and the Agentic**

We're taking first steps toward agentic commerce in ChatGPT with new ways for people, AI agents, and businesses to shop together.

[Read More](#)

## **What is the Access Switch?**



What is the Access Switch? A typical enterprise hierarchical LAN campus network design includes an access layer, distribution layer, and the core layer. In each

[Read More](#)

## **Core, Aggregation, or Access Switches? Choose the**

Discover the crucial differences between core, aggregation, and access switches. Find out which type can best transform your network's

[Read More](#)

## **Choose access layer switch for the access layer network**

A typical enterprise hierarchical LAN campus network design includes access layer, distribution layer, and the core layer. In each layer, the enterprise switches are categorized, among

[Read More](#)



## **How to Choose the Right Access Layer Switch?**

Learn 8 key factors--ports, PoE, speed, security & TCO--to choose the right access layer switch and future-proof your network. Read the guide now.

[Read More](#)

## **Choose access layer switch for the access layer network**

What is the main function of an access layer? What does an access layer switch do? How to choose the right network switch for the access layer?

[Read More](#)

## **What Kind of Access Layer Switch Should You Get?**

Many factors must be considered when selecting access layer switches, including port density, port speed, security, scalability, deployment and



[Read More](#)

## Data Center Access Layer Design

Overview of Access Layer Design Options Access layer switches are primarily deployed in Layer 2 mode in the data center. A Layer 2 access topology provides the following unique capabilities

[Read More](#)

## Contact Us

---

For datasheets, pricing, or custom data center infrastructure solutions, please visit:  
<https://zeldaterblanchephotography.co.za>